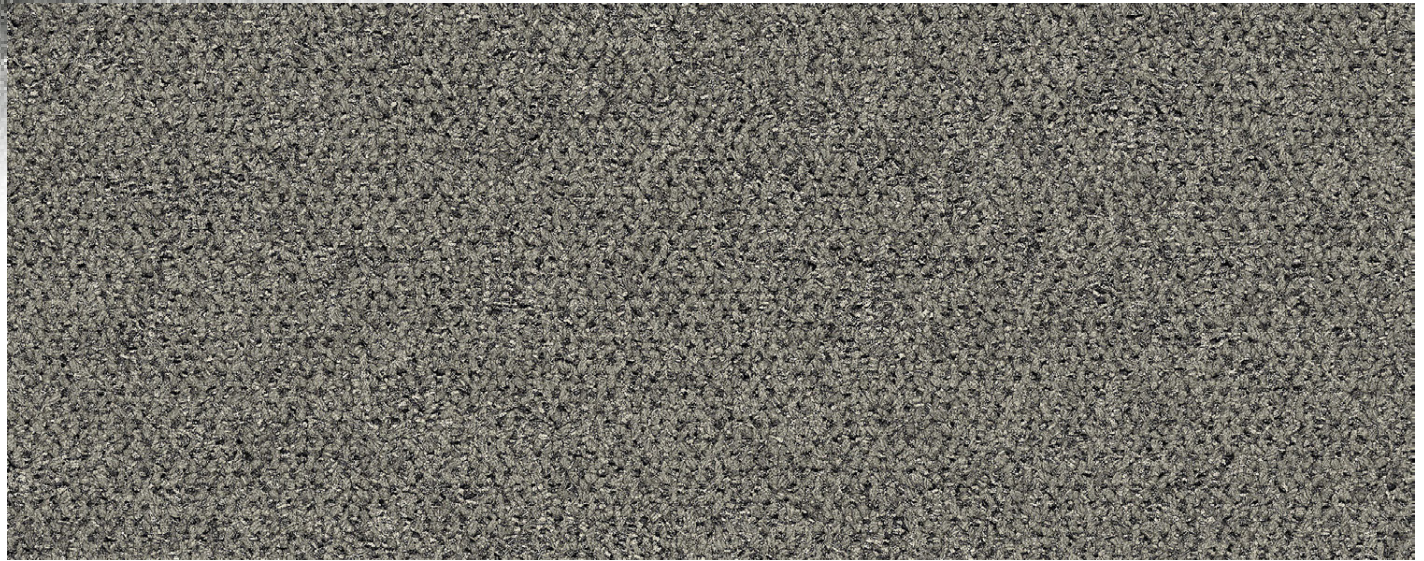


# SHADOWFX™ SDC

## VERMONT SLATE COLLECTION

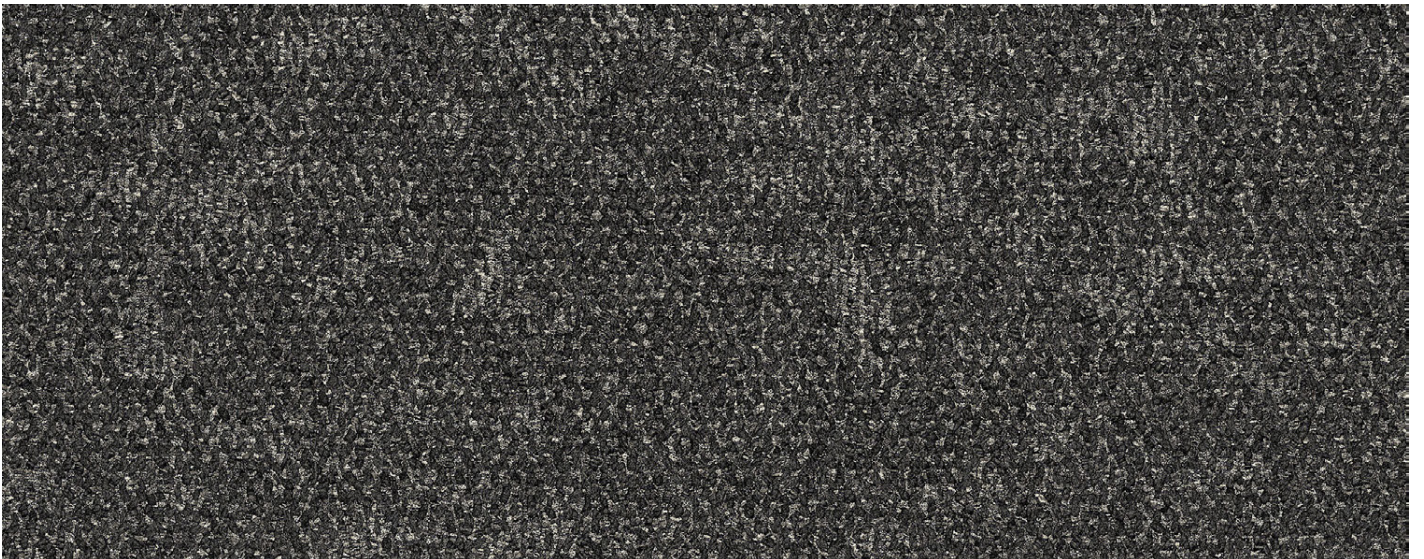
Meets ANSI/ESD S20.20-2014, EN61340-5-1, ATIS 0600321.2015, FAA 019f, Motorola R56, MIL-STD-1686 — for any static control flooring application.

**SHADOWFX SDC — CONSTRUCTED OF PREMIUM BRANDED YARN FOR DEMANDING ESD APPLICATIONS AND 24/7 ENVIRONMENTS.**



3-50 Vermont Gray Slate

19.69" 24"



3-51 Hoosic Riverbed

19.69" 24"

**ShadowFX ESD carpet tile is made by an industry leader in the development of flooring made using recycled materials and 100% Carbon Neutral for the total life cycle.**





3-52 Vermont Black Bear



3-53 Red Pine Bark



3-54 Cedar Wood



3-55 Northern Hardwoods



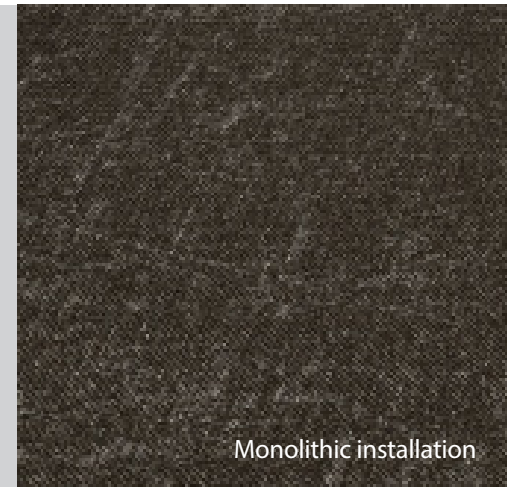
3-56 Black Maple

## Choose your tile pattern and enjoy worry-free tile replacement

The rock-like etchings in our Vermont Slate carpet tiles flow seamlessly across the surface of the floor in a non-directional or monolithic installation. And the mergeable design allows you to replace tiles without worrying about dye lots or affecting the overall appearance of the floor.

***“Your product rocks and I’m so glad we were able to find an attractive solution that didn’t leave us with some run-of-the-mill ugly disaster in the middle of our workspaces. You would never know it was ESD, WHICH IS AMAZING!”***

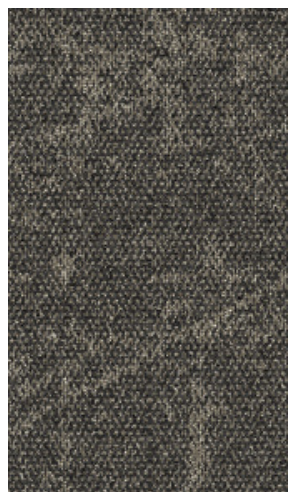
Sydney Young, Associate IIDA, Interior Designer, FFKR Architects



Monolithic installation



3-57 Otter Creekbed



3-58 White Riverbed



3-59 Champlain Shoreline



3-60 Caspian Shoreline



3-61 Willoughby Shoreline



# SHADOWFX™ SDC VERMONT SLATE

## Simplicity in a Complex World

Staticworx Vermont Slate carpet-tile collection combines the high performance and durability you expect from Staticworx floors in a design that transports you to the rocky hills of Vermont. Warm, monochromatic earth tones create a more peaceful environment, bringing simplicity to a complex world, inspiring creativity, and encouraging a sense of wellbeing and connectedness.

### Passing the Test

- Mergeable design** - eliminates worry about matching dye lots
- No fade** - solution-dyed year prevents fading
- Monolithic design** - easy to install and replace
- Durable** - rated for high traffic
- Superior static control** - meets the most stringent ESD standards\*
- Static dissipative** - meets standards for telecom and government spaces\*
- Recycled content** - Total 59%, Pre-consumer 57%, Post-consumer 2%



## ShadowFX Floating Floors

### INSTALL OVER ANY EXISTING HARD SURFACE - AN IDEAL OPTION FOR OCCUPIED WORKSPACES

Create a floating floor by positioning Shadow FX carpet tiles over GroundBridge™; then join tile corners with TacTiles®.

- No VOCs — no need to shuffle employees to different work areas or endure downtime and disruptions.
- No need to remove furniture. Just lift desk and consoles and place tiles in designated spaces.
- No glue, no mess — easy, fast, clean installations & tile replacement.



Floating ShadowFX carpet tile installed over access flooring

## SPECIFICATIONS

**Construction:** Tufted textured loop

**Yarn weight:** 17 oz /yd<sup>2</sup> (576 g/m<sup>2</sup>)

**Total Thickness:** .236 inch

**Fiber Modification Ratio:** 1.7 to 1.9

**Sizes:** 19.69" x 19.69", available in 24" x 24", PosiTile-compatible with Tate Access Floors

### MEETS THE FOLLOWING STANDARDS:

**ANSI/ESD S20.20**, for electronics manufacturing and handling

**Motorola R56**, for 9-1-1 dispatch facilities

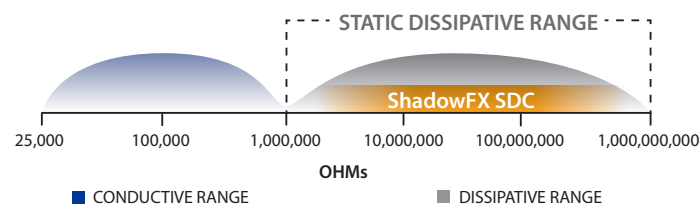
**ATIS-0600321.2015**, for telecom applications

**FAA 019f**, for flight control applications

**NFPA 99**, for use in healthcare facilities

**Army Corps of Engineers UFGS 09 62 38**, for static-control in government facilities

## Static Dissipative for ESD Safety



Monolithic



Non-Directional

Installation Method



ESD Messaging Tiles Available

