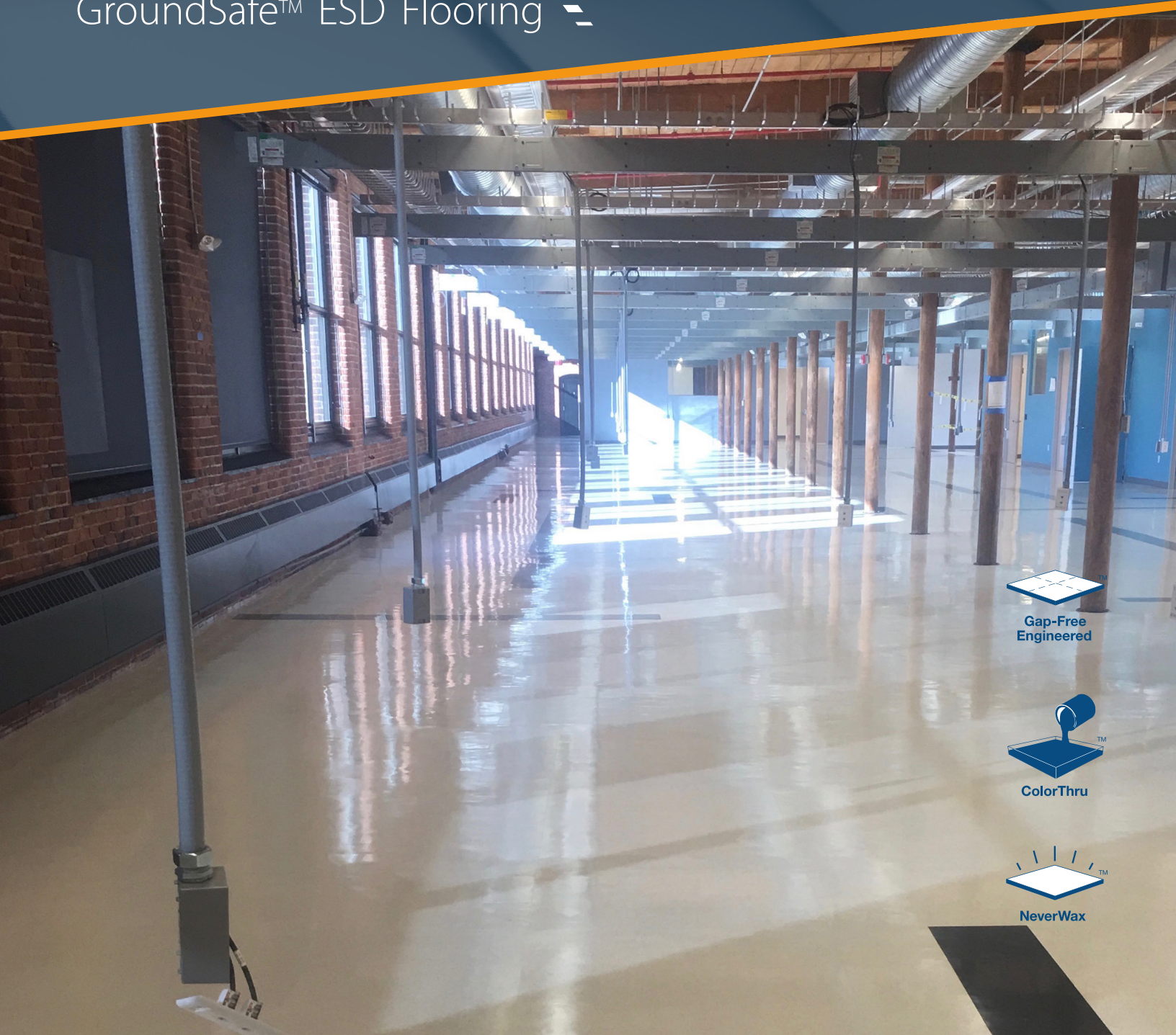


**staticWorx**<sup>®</sup>  
GroundSafe™ ESD Flooring



  
Gap-Free  
Engineered

  
ColorThru™

  
NeverWax™

# AmeriWorx™ ESD Series

Precision Milled Vinyl Tile

**AmeriWorx Solid Vinyl Tile (SVT) is 100% American made. Precision-milled in line, each tile is perfectly square and dimensionally stable for easy installation with no ugly gaps between the seams. Installed using Statbond pressure-sensitive adhesive, AmeriWorx™ tile handles traffic immediately with no downtime for setting or drying.**

**AmeriWorx ESD tile meets all parameters of ANSI/ESD S20.20 for static-control—and both ESD and material performance are guaranteed for the life of your floor.**

# 10 REASONS why you should install AmeriWorx SVT in your facility:

**1**

## **SQUARE, DIMENSIONALLY STABLE—FOR EASY GAP-FREE INSTALLATIONS**

AmeriWorx SVT is precision-milled: an automated process that eliminates human error and guarantees a perfectly square tile. The tile is produced in large format then milled to tile size once the sheet has acclimatized—a process control that prevents dimensional changes. Perfectly square, dimensionally stable AmeriWorx™ SVT is easy to install with no ugly gaps between seams.

**2**

## **SOLID-THRU CONSTRUCTION**

Our tightly controlled manufacturing process, using identical raw materials for each run, along with filler-free, solid-thru construction prevents shrinkage. Because there is no top lamination or wear layer, it's easy to restore the surface to its original shine by buffing out scratches or scrapes.

AmeriWorx is completely unaffected by ambient humidity. And because it's solid, color-thru, the color of AmeriWorx tiles, will not fade or discolor from UV ray exposure.

**3**

## **EASY TO CLEAN, NO ESD WAX REQUIRED.**

Conductivity and color run consistently through the entire thickness of AmeriWorx™ tiles. We chose the resin used in our tile after significant research, based in part on clean-ability studies performed in high-traffic areas of grocery and retail spaces.

Unlike vinyl composition tile (VCT), AmeriWorx tile does not require ESD wax or expensive maintenance. Simply damp mop to prevent the accumulation of dirt and debris. While waxing is certainly an option, AmeriWorx tile maintains its conductivity without the use of ESD wax.

\* SVT = solid vinyl tile, VCT = vinyl composition tile



“ We chose AmeriWorx SVT for our facility’s 32,000 sq. ft. production floor because we wanted the ultra-clean white look and great aesthetics realized with vinyl flooring as well as the excellent ESD protection offered with conductive tile.”

Kim Boykin, VP of Operations  
Fawn Electronics, Nashville, NC



*AmeriWorx vinyl tile installed with our ShadowFX ESD carpet tile.  
Fawn Electronics*

“ StaticWorx products were instrumental in our success on the project. The installation process using StaticWorx pressure-sensitive adhesive helped us bid and install static-dissipative tile at a production rate well above our historic levels. Our installers were genuinely impressed with how square, true, and consistent the product was. We are happy, and more importantly, our customers are happy.”

Matt Graves  
Strahm Building Solutions

**4****AMERIWORX TILE IS TESTED AND VERIFIED TO MEET ESD SPECIFICATIONS**

During the manufacturing process every AmeriWorx tile is electrically tested and verified to meet ESD specifications. As production is tightly controlled, there is no variation in conductivity.

**5****LIFETIME WARRANTIES ON BOTH WEAR AND ELECTRICAL PERFORMANCE**

StaticWorx offers a lifetime warranty on both wear resistance and static-control performance. AmeriWorx tile is impervious to traffic and provides permanent static control.

**6****EXTREMELY DURABLE, WITHSTANDS THE DEMANDS OF FORKLIFT TRAFFIC**

AmeriWorx tile can handle 2,500 lbs. of pressure per square inch according to ASTM F970. With capacity to support loads weighing 1.25 tons per square inch, AmeriWorx tile can easily support heavy traffic from forklifts. Scratches and scrapes can simply be buffed out.

**7****INSTALLATION PEACE OF MIND**

Square, dimensionally stable AmeriWorx tiles fit together perfectly, making for easily installed, gap-free floors.

After your floor has been installed, StaticWorx will help you facilitate testing to verify compliance with ANSI/ESD S20.20.

**8****LEED CREDITS**

AmeriWorx contributes to three US Green Building Council LEED credits (4.1, 4.2 and 4.3) for low emitting materials and recycled content: 10.4% pre-consumer recycled content. AmeriWorx™ tile maintains the lowest VOC and out-gassing parameters in the industry.

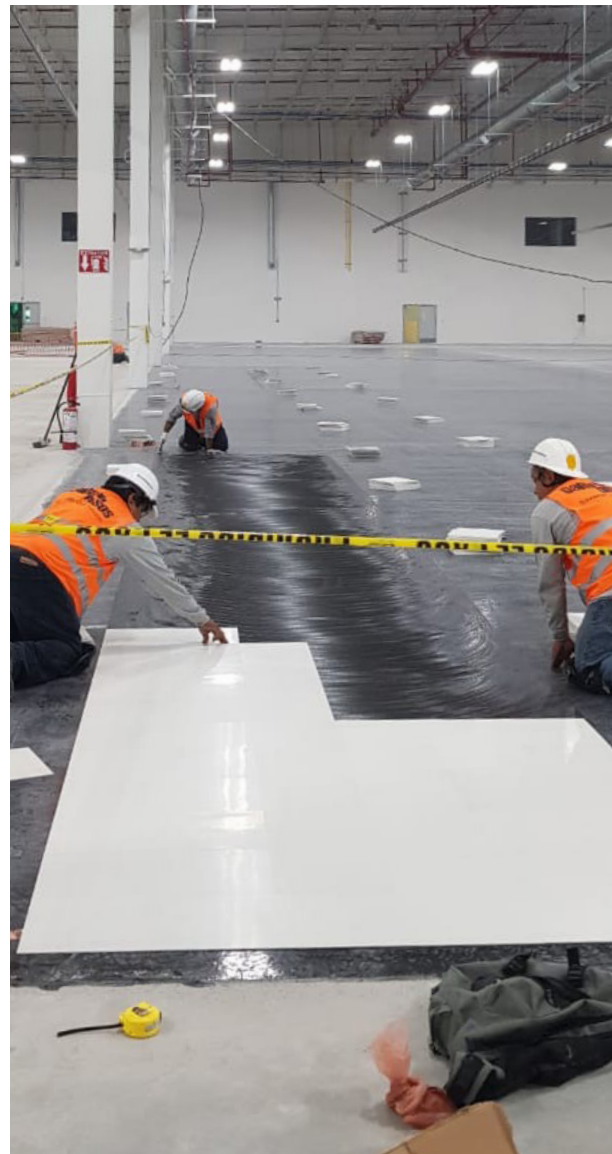
AmeriWorx vinyl tile complies with the environmental standards instituted by the state of California and other certifying agencies. All StaticWorx adhesives contribute toward LEED Credits (4.1) for low emitting adhesives and sealants (zero VOC's).

**9****COMPETITIVELY PRICED**

We sell AmeriWorx SVT direct to the contractor. With no multi-tiered distribution there's no extra markups, making AmeriWorx™ vinyl tile competitively priced.

**10****NO DOWNTIME—WALK ON YOUR FLOOR IMMEDIATELY AFTER INSTALLATION**

When installed with our Statbond pressure-sensitive adhesive, AmeriWorx tile can handle immediate traffic—so there's no downtime. Simply apply the adhesive, lay the tile, and your floor is ready for traffic.





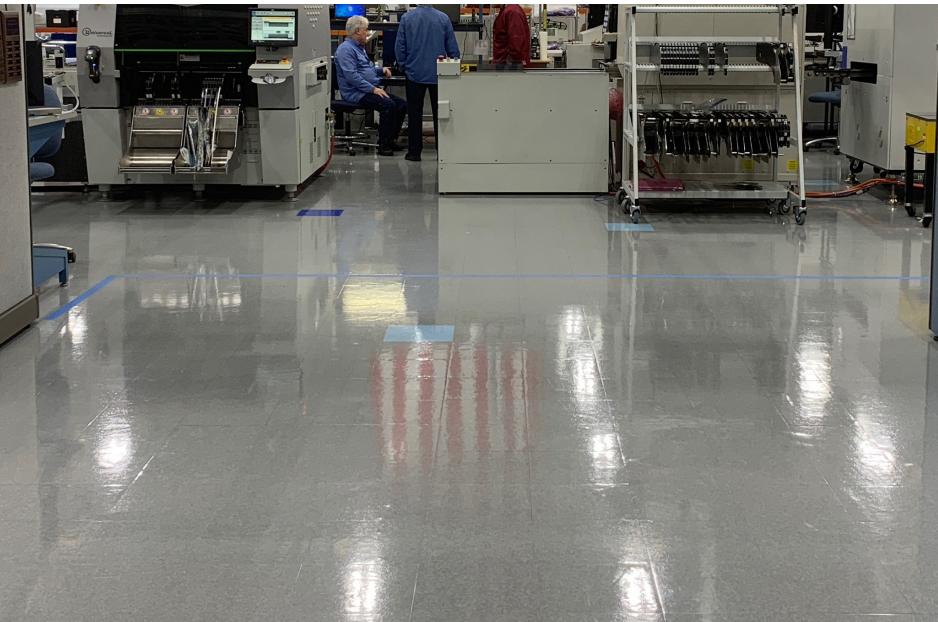
“As an ESD auditor, it is a priority that the floor meets and maintains spec over the long term in order to keep our products safe. We audit every workstation monthly and AmeriWorx SVT has never let us down. Our facility managers and supply chain managers greatly appreciate the seamless appearance and high durability that AmeriWorx tile provides. We appreciate how AmeriWorx SVT makes our facilities look as clean and bright as the hospital environments that our products service.”

Ed Morrill, ESD Control Coordinator  
Philips Healthcare, Andover, MA



*AmeriWorx™ vinyl tile installed with StatBond pressure-sensitive adhesive allows for rapid installation and immediate traffic.*





## NO SHRINKAGE HERE!

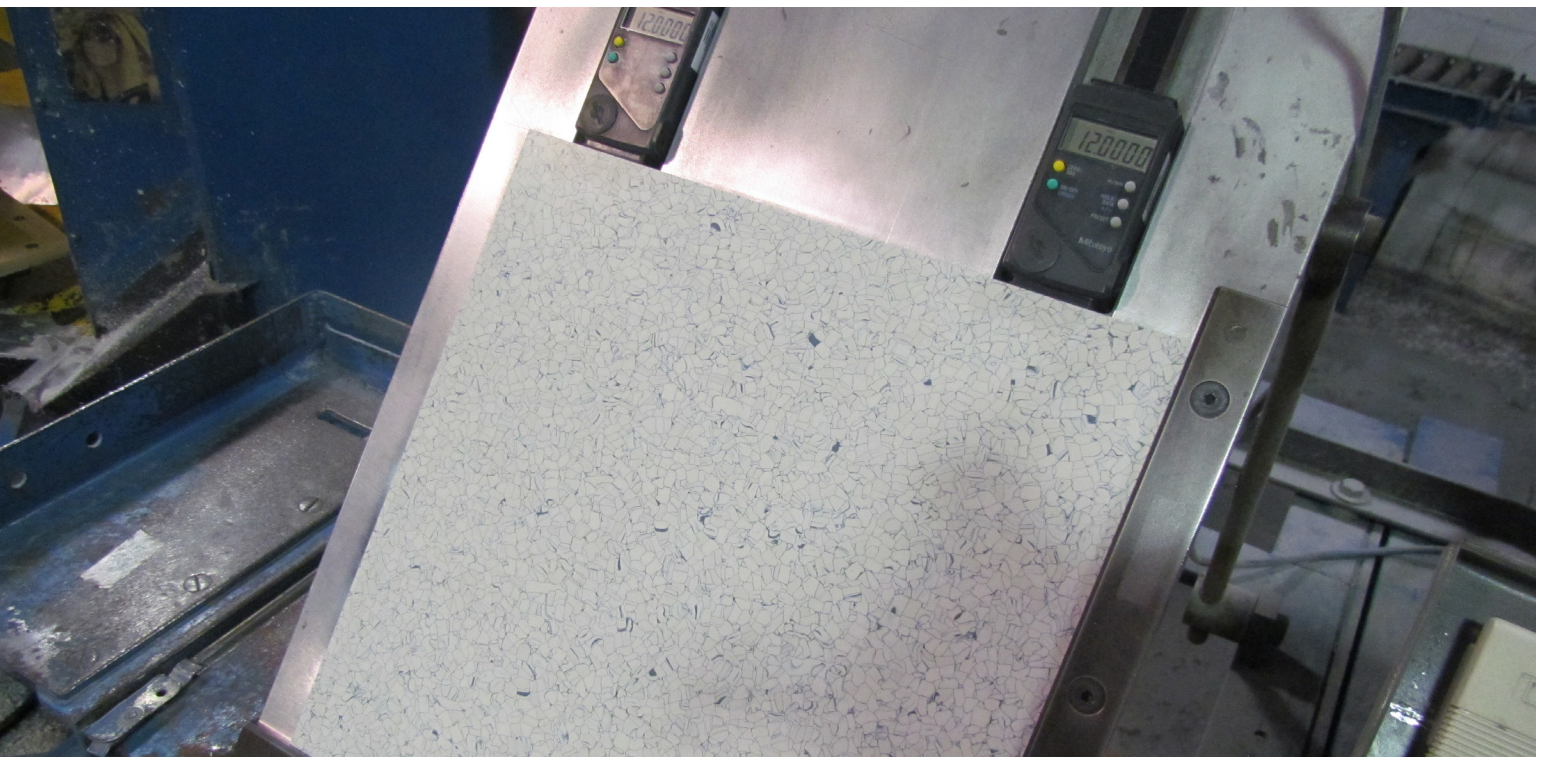
We not only meet ASTM squareness standards (which allow a .25 mm variation)—we exceed them. Our squareness tolerance is  $\leq 0.0020''$

Imported ESD tile needs to be seam welded and installed with messy epoxy adhesives to prevent shrinkage.

AmeriWorx™ never needs to be seam welded to compensate for shrinkage.

“ Our facility guy wasn’t overly excited with the decision of going with the tile over the epoxy floor but now that he has had a chance to work with it, he is glad we went with the tile. We worked with our cleaning crew and have worked out a cleaning/polishing process that really shows off the floor. It was a pleasure working with you on the project.”

John Hare  
Director of Facilities and  
Configuration Management  
EIT, LLC



*AmeriWorx vinyl tile—automated in-line squaring.*



# Pairing the best ESD flooring to accommodate varied applications

## PRECISION MILLED

All AmeriWorx tiles can be installed with Statbond, pressure-sensitive adhesive, eliminating problems associated with wet-set graphite and carbon-loaded adhesives. For cleaner, faster installation. *(Can be steam-welded if desired.)*



## AMERIWORX CLASSICS VINYL TILE

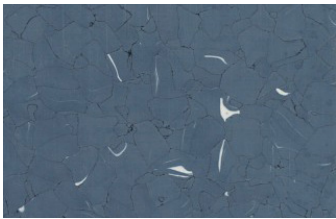
Lifetime warranty. No heavy metals. Precision milled processing for perfectly square tiles—enabling fast, gap-free installations. Color runs the full thickness of tile. Handles heavy loads—2500 psi. No wax required.

Available in both Conductive and Static-Dissipative grades.

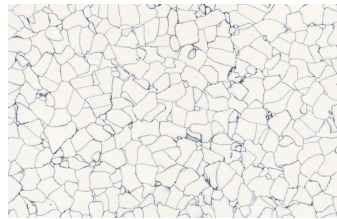
## AMERIWORX ROX VINYL TILE

Meets all the same parameters as our regular AmeriWorx vinyl tile in styles and colors inspired by nature.

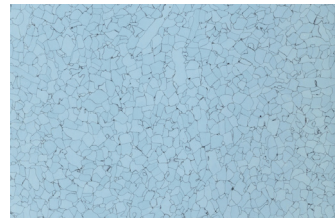
- 12" Precision milled 12" x 12" standard
- 24" 36" Available to custom order in 24" x 24" and 36" x 36"



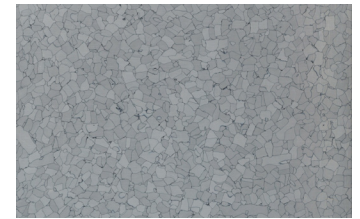
APPALACHIAN SPRING



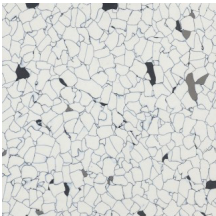
SPRING SNOW



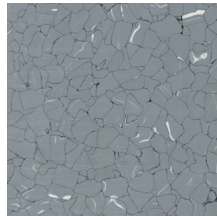
BLUE MORAINE



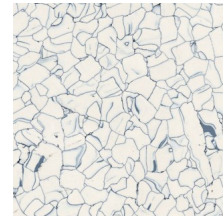
GREY DOLOMITE



MORNING MIST



GREAT PLAINS



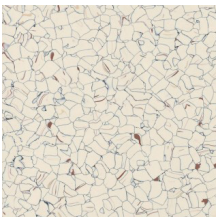
BIG SKY COUNTRY



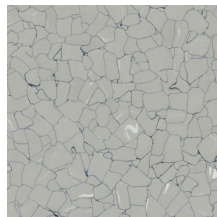
ACADIA BLUE ROCK



BLACK ROCK CANYON



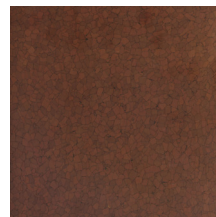
RIO GRANDE



ADIRONDACK RIDGE



SHENANDOAH VALLEY



SEDONA SANDSTONE



LAKE SHORE BOULDER



AMETHYST



LIVING CORAL



PEARL



BLACK HILLS



All StaticWorx flooring products carry a Lifetime Conductivity Warranty and are Roller Caster Electrical Test proven.



Warranty for all products requires that the tile system is installed using StaticWorx approved materials and procedures.

## SPECIFICATIONS

### AmeriWorx™ Series

Precision Milled Solid Vinyl Tile

### Composition:

Precision milled vinyl tile of high density resin with a conductive carbon matrix.

### Materials:

- Lifetime Warranty
- Free from defects in workmanship

### Maintenance:

- Damp mop
- No wax

### Size:

12" x 12" (24" x 24" and 36" x 36" available as a custom order)

### Thickness:

3 mm

### Grounding Material (supplied with order):

One 2" x 24" copper strap installed every 1000 ft.

### Electrical Performance:

Surpasses recommended standards of ANSI/ESD S20.20-2014  
Lifetime warranty for static control

### Resistive Characteristics:

- ANSI/ESD.S7.1-2013
- Conductive =  $< 1.0 \times 10E6$
- Static Dissipative =  $\geq 1.0 \times 10E6$  and  $< 1.0 \times 10E9$

### Floor & Footwear Resistance in Combination with a Person

- ANSI/ESD STM97.1-2015  $< 3.5 \times 10E7$

### Voltage:

- ANSI/ESD STM97.2-2016  $< 25$  volts with conductive footwear

### Available in dissipative and conductive ranges

Static-dissipative available by custom order.

“ AmeriWorx SVT allowed us to greatly increase our productivity. With the tiles being perfectly square and having no variation in gloss or thickness, we essentially improved our productivity by as much as 20%. Considering that labor is as much as 30% of the total cost of a new floor, that can mean the difference between a contractor making money or losing money on a tight project.”

Michael Alley, Master Flooring Mechanic  
(Installed all 32,000 sq. ft. of AmeriWorx SVT at Fawn Electronics in Nashville, NC)

## About StaticWorx

StaticWorx manufactures the highest quality ESD flooring products available today. Our company has installed tens of millions of square feet of ESD flooring throughout the U.S., Canada, Mexico, Australia, Singapore, New Zealand and the U.K.

Some of our clients include EMC Corporation, BAE Systems, Benchmark, Flex, Lockheed Martin, Microsoft, Philips Healthcare, Amazon, Apple, Intel, Google, and Facebook.

All StaticWorx products are made in ISO-9000 certified factories and undergo rigorous testing by independent laboratories prior to shipment.

For clients who prefer a worry-free project, StaticWorx will help choose the best floor for the specific application, match your project with our best flooring installation team, oversee the installation, and test your new floor's electrical properties to be sure the floor meets your specifications.

**staticWorx**®  
GroundSafe™ ESD Flooring

372 Hurricane Ln Suite 201,  
Williston, VT 05495

617-923-2000

f: 617-467-5871

info@staticworx.com

[staticworx.com](http://staticworx.com)